



# She 36

every inch a lady

See the rest . . .  
invest in the best -

# She36



## A family affair

We have all admired those brave sailors who set off alone to circumnavigate the globe or who pit their collective skills against time and weather under full canvas in ocean racing ... and wished we had their courage and abilities.

But this isn't all that yachting is about. No longer is the family left ashore to wave goodbye to the intrepid yachtsman; for sailing is a family affair.

## All occasions

The She 36 offers the ultimate in craftsmanship and luxury to devotees of leisure cruising.

A hard day's sailing ends with the relaxation of a hot shower and deep foam bunks. A meal in the saloon or cockpit is no hurriedly snatched snack, the well equipped galley sees to that. Or drop anchor in some secluded bay and bask in the sunshine on the roomy deck.

She 36 is the boat for all occasions.

*Sailing or sunbathing, She 36 offers both in comfort and safety. The anti-skid 'SHEDEK' is standard . . . the finish optional.*

## She's a lady

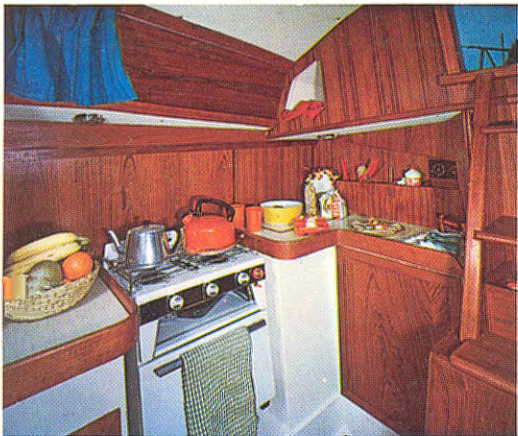
Breeding shows in the way She 36 handles under all conditions and the rugged design assures a high degree of safety.

Like all the SHE yachts the 36 is from the drawing board of Sparkman and Stephens. This and the quality workmanship of South Hants Marine guarantee you a craft you will be proud to own.

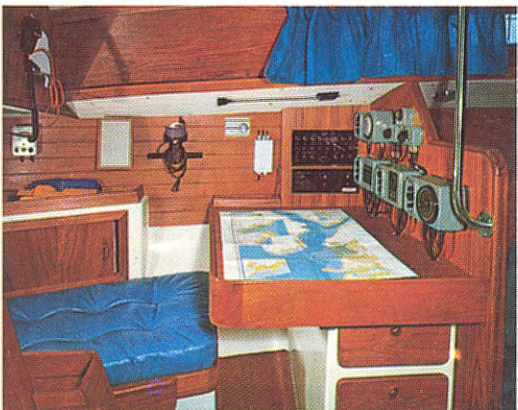




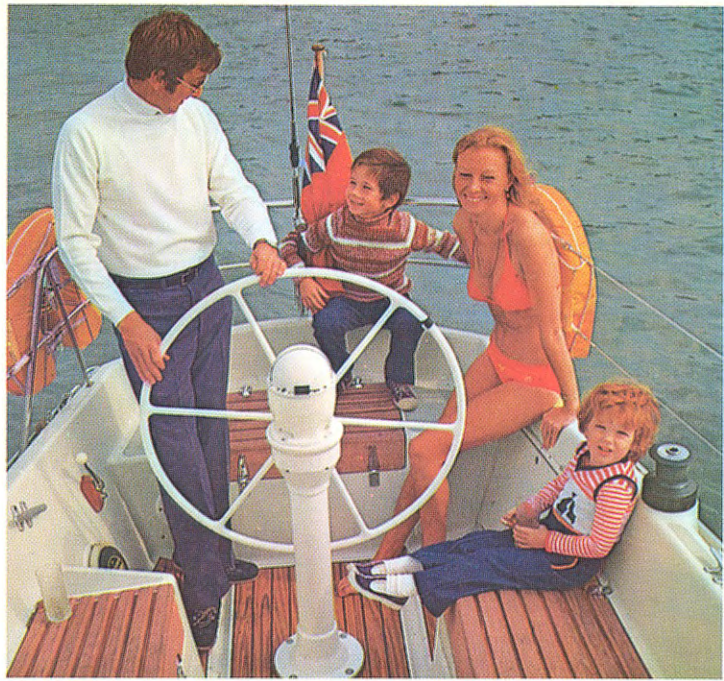
1 & 2



3



4



5

1 & 2

*For relaxation aboard practical comfort and elegance is the keynote with wide berths upholstered in a choice of materials and colours.*

3

*Food is fun . . . there's room to prepare and cook a gourmet meal in She's superb galley.*

4

*'Where are we?' In She's chart room , space for all the navigational aids you care to specify.*

5

*A pleasure shared*

6

*Bright and airy guest cabin and spacious toilet facilities emphasise the luxury of the She 36*

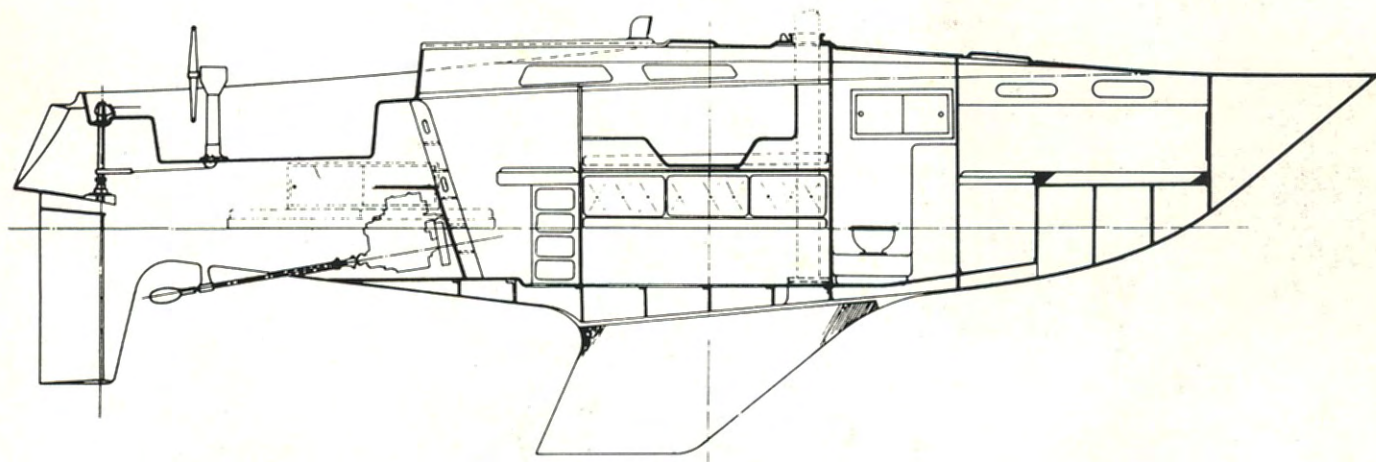
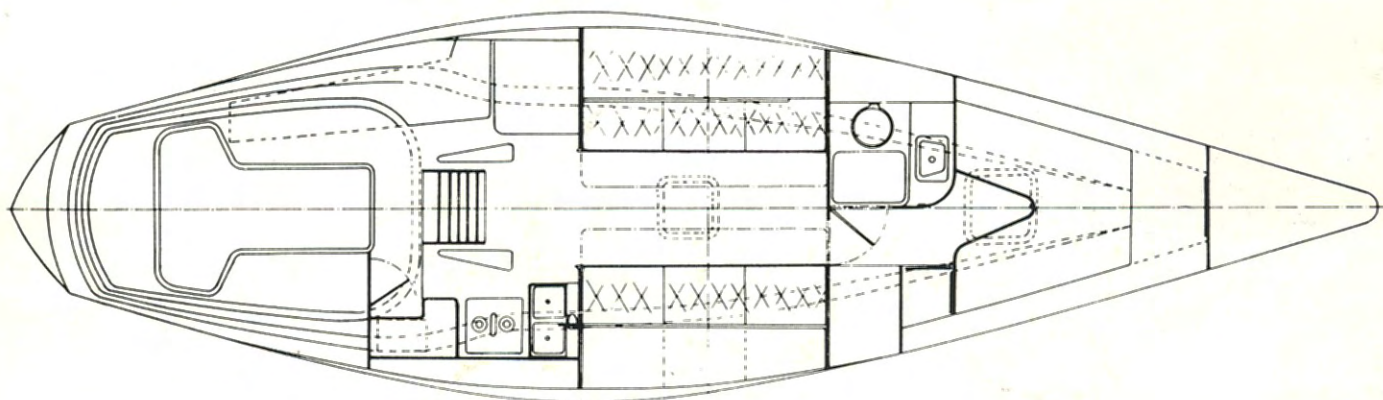
6



# She 3336

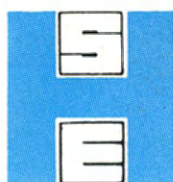
## Vital statistics

Length overall 35.6    Beam 10.4    Draft 6.0    Displacement (approx) 5½ tons    Engine 24 Diesel  
Accommodation is for six



*South Hants Marine reserve the right to change design, construction and specification without notice in the interest of development. All measurements are approximate*

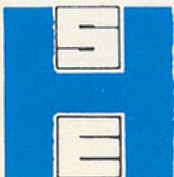
*A detailed specification is available on request from:-*



## South Hants Marine

WINCHESTER ROAD CHANDLER'S FORD HANTS ENGLAND  
telephone Chandler's Ford 2241 (04215)

# SHE 36



South Hants Marine

WINCHESTER ROAD, CHANDLER'S FORD, HANTS, ENGLAND  
Telephone: Chandler's Ford 2241 (04215)

# SOUTH HANTS MARINE

DIVISION OF SOUTH HANTS ENGINEERING COMPANY LTD

Marine Engineers—Yacht Sales and Brokers

CHANDLER'S FORD, HAMPSHIRE, ENGLAND

Telephone: (04215) 2241

## SHE 36 COMPLETED.

## PRICE LIST

(ALL EXCLUDING V.A.T.)

Standard SHE 36		£29,400.
Cove line and boot top.	from	50.
Coloured hull.	from	150.
Two tone deck.	from	100.
SHEDEK anti skid lines.		100.
Teak simulated deck.		500.
Antifoul Tiger Red/Blue		245.
Martec folding propeller.		235.
Alternative colours for interior units, from		50.
Arrangement No.1. consisting of two settee berths with two pilot berths.		Standard.
Arrangement No.2. comprises of stowage area to starboard including drinks locker.	extra	£150.
Arrangement No.3. 'U' sofa layout with pilot berth starboard.	extra	£250.
Arrangement No.4. 'U' sofa layout with stowage area and drinks locker to starboard.	extra	£400.
Arrangement No.5. two settee berths with stowage areas port and starboard	extra	£300.
PART SHE 36 price (Hull, deck and units)		£13,595.
Complete set of deck gear to comply with standard specifications.		£2,585.
Pulpits, stanchions and life lines fitted.		550.
Mast boom spinnaker pole with all standing and running rigging, halyard winches and mast ring.		£2,550.
Volvo MD11C engine fully installed and ready to run with fixed 2 blade propeller.		£3,465.
Wheel steering.		725.
All hatches and windows fitted.		415.
Extra for "U" shape moulding.		100.
Stern gear and engine beds fitted, including fixed 2 blade propeller.		420.
Lloyds Hull moulding certificate		150.
Lloyds 100A1 (excluding extra ground tackle etc.)		250.

# SOUTH HANTS MARINE

DIVISION OF SOUTH HANTS ENGINEERING COMPANY LTD

*Marine Engineers—Yacht Sales and Brokers*

CHANDLER'S FORD, HAMPSHIRE, ENGLAND

Telephone: (04215) 2241

## SHE 36 PART BOAT SPECIFICATION

Hull colour white (coloured hull and boot top extra)  
Deck colour light grey (Teak simulation and SHEDEK Extra)

Interior unit colours:-

Base units - light stone.  
forward deck head - off white  
toilet and deckhead - light blue  
(alternative colours extra) "U" shape extra.

The Hull and Deck are bonded together complete with aluminium alloy toe-rails  $\frac{3}{4}$ " marine plywood bulkheads are fitted and bonded to the hull in standard positions. Chainplates, backstay plate and stem tack fitting are all supplied and fitted.

The keel is a lead/antimony casting and is fitted to the hull with high tensile bolts correctly staggered in galleries. The rudder on stainless steel stock complete with bearings and tiller head fitting is also supplied ready fitted.

The mouldings for the main sliding hatch, cover and cockpit seats and lockers are supplied but not fitted, together with aluminium framed opening perspex forehatch and main saloon hatch.

The following mouldings are available as optional equipment:-

Ice box locker, saloon corner mouldings sponge bag locker  
gas bottle locker and mast ring moulding (interior)

Part boat.	£13,595.
Engine	3,465.
Deck Gear	2,585.
Mast and rig.	2,550.

ALL PRICES SUBJECT TO 12½% V.A.T.