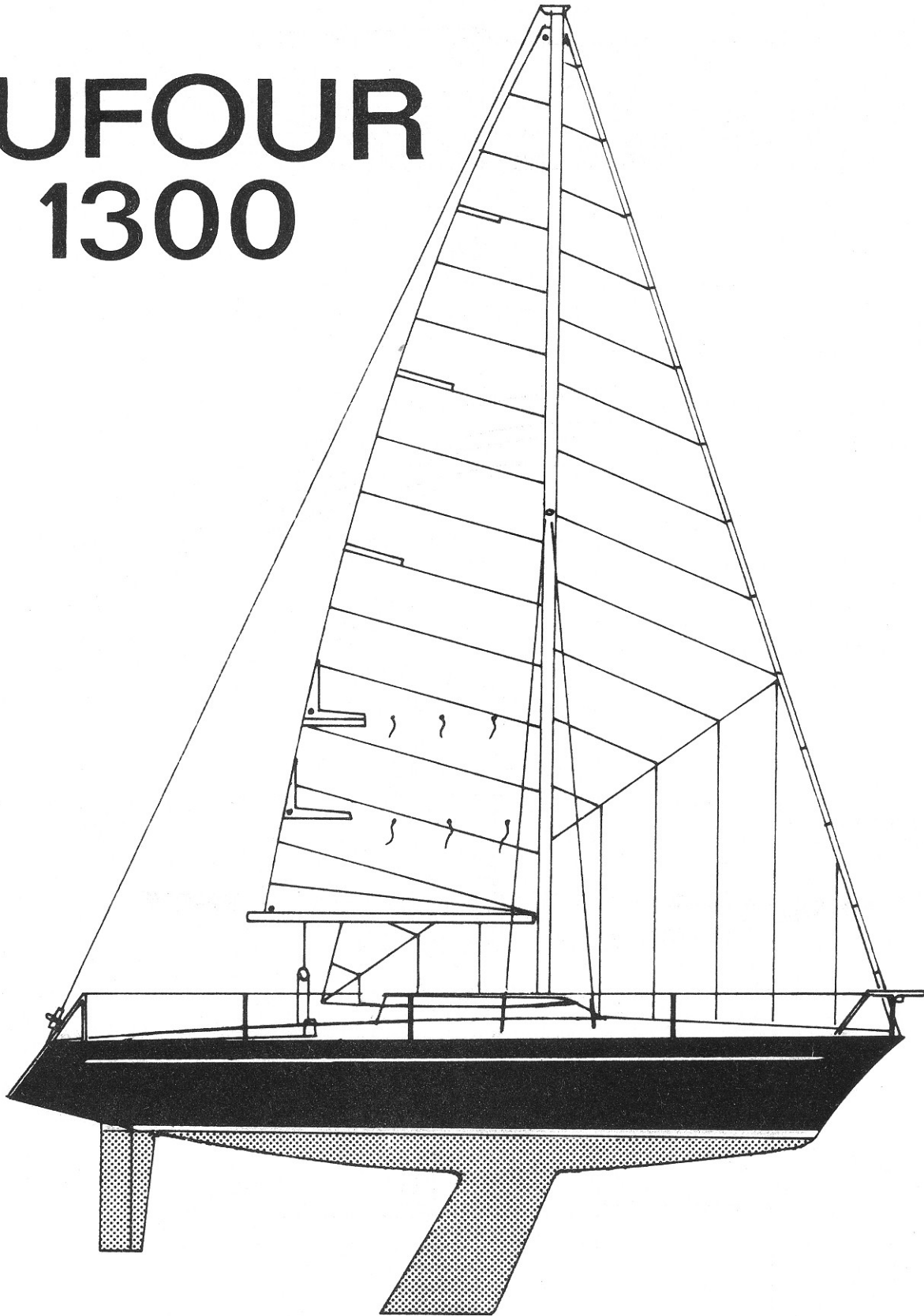
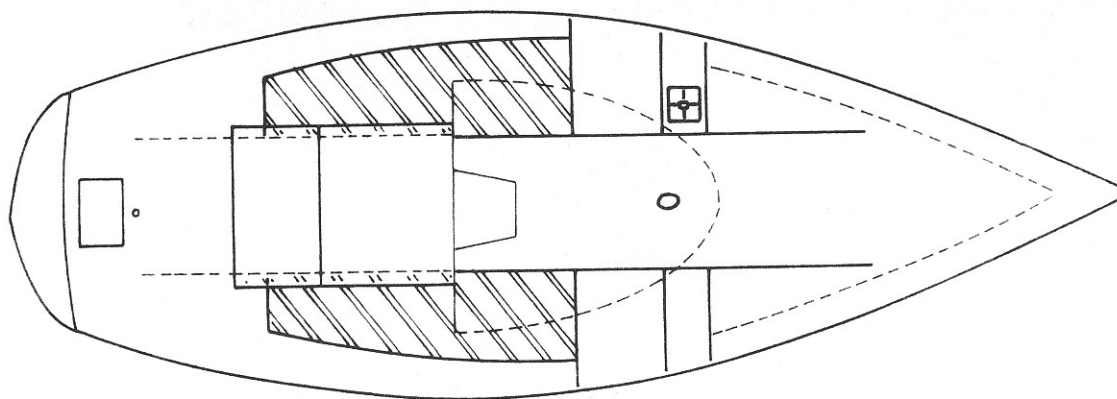
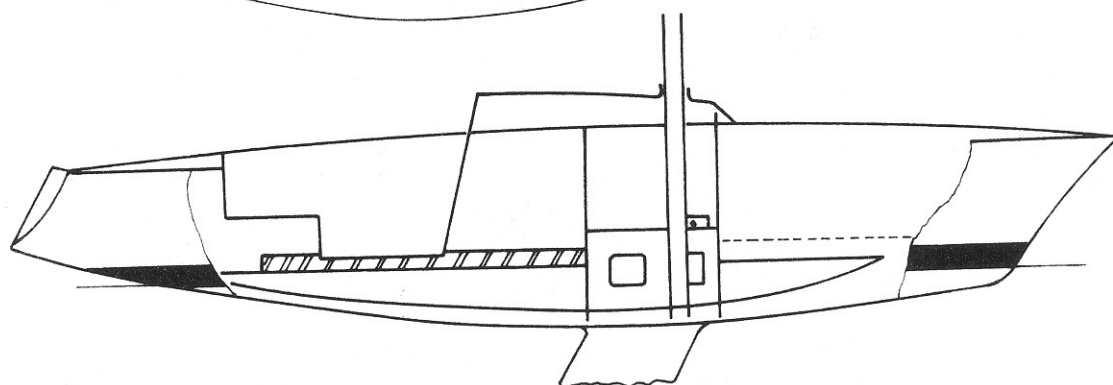
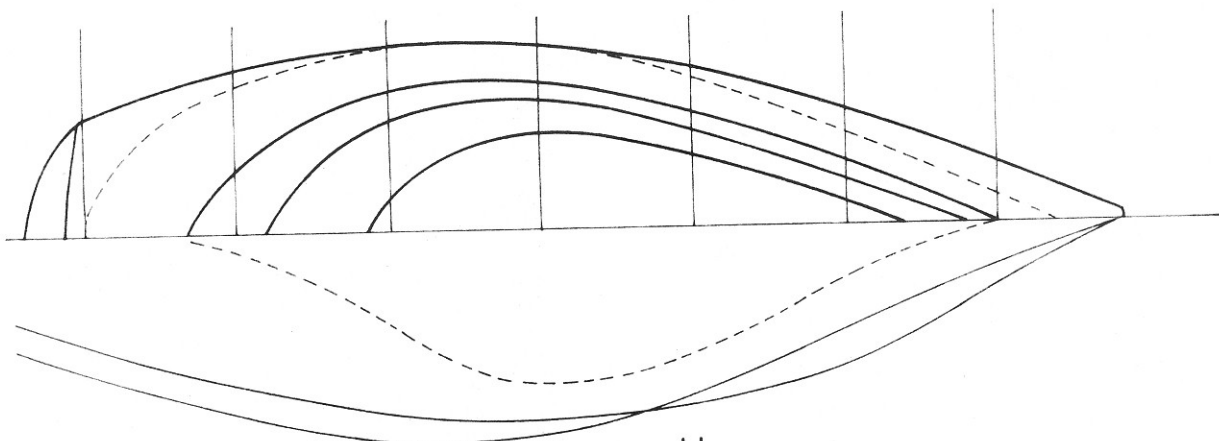
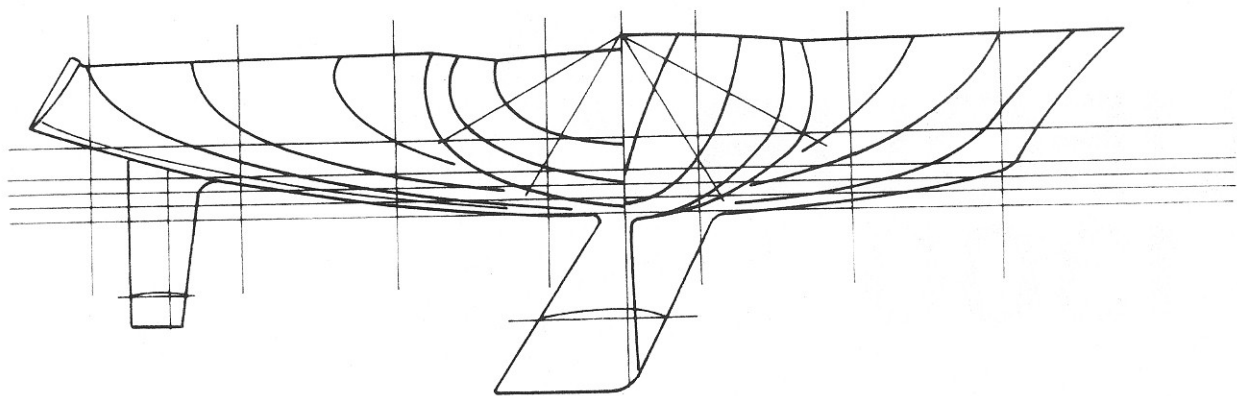


# DUFOUR 1300



MICHEL DUFOUR S.A.

Zone Industrielle de PERIGNY . 17001 LA ROCHELLE . Tel: 53.16.46.



1 m

SPECIFICATIONS D U F O U R 1 3 0 0

Designed by : MICHEL DUFOUR

Construction: Polyester sandwich hull and deck  
Fittings, bolts and screws in stainless steel

Colour : White deck  
White hull (standard)  
Red or navy-blue hull (optional, extra charge)

Dimensions : L.O.A. 7.26 m 23'9"  
L.W.L. 5.50 m 18'  
Beam 2.64 m 8'8"  
Draft 1.50 m 5'  
Headroom 1.32 m 4'4"  
Displacement 1300 Kg.  
Ballast 570 Kg.

Sail areas : Mainsail 9.67 m2 104 sq. ft.  
(as indication Genoa 19.67 m2 212 sq. ft.  
only) Working  
jib 15.60 m2 168 sq. ft.  
N°1 jib 11.58 m2 124 sq. ft.  
N° 2 jib 7.22 m2 119 sq. ft.

2 berths

IOR Rating approx. 18'

DUFOUR 1300

INVENTORY

This boat is essentially designed for racing, and accommodation is thus restricted to minimum.

As we know by past experience, each skipper has his own personal view on the choice and arrangement of equipment, and we have, therefore, installed basic equipment only on the standard boat.

In the same way, we have left it up to the owner to choose between comfort and minimum weight with regard to kitchen and general equipment.

Deck Fittings :

- Stem fitting
- Pulpit
- Removeable stanchions and life-lines
- Steel jib sheet tracks with roller fairleads and foot-blocks
- 2 Lewmar 25 C winches for jib halyard
- 1 Lewmar 8 C winch for jib halyard
- 1 Lewmar 5 winch for mainsail halyard
- Ermat main sheet track with roller slider
- Self-draining cockpit with Henderson bilge pump
- Well for life-raft in bag on fore-deck
- Tiller with extension
- After locker
- After stanchions with supporting leg forming pushpit
- Navigation lights on pulpit and transom
- Mooring cleats fore and aft
- 2 Lewmar winch handles

Rigging :

- Alloy mast, sound-deadened with internal halyards
- Mainsail and jib halyards in wire and Terylene to companionway
- Terylene spinnaker halyard with uphaul and downhaul
- Standing s/s rigging with swaged end fittings and stainless steel rigging screws
- Backstay with adjuster
- Spinnaker boom track with cup-type slider
- Braided Terylene jib and mainsail sheets
- Main sheet purchase with jam-cleat
- Alloy boom with fitting for outhaul
- Kicking strap with jam-cleat
- Alloy spinnaker boom

All blocks are in Tufnol and stainless steel  
Shackles are in stainless steel and lines in Terylene

Accommodation :

Port

- One berth
- Galley shelf with Gas stove
- Locker

Starboard :

- One berth
- Chart table
- Locker
- Light over chart table
- Light over each berth
- Battery 12 Volts 55 amps.

Mattresses on berths are 10 cm thick with vinyl (or similar) cover.

Boot-topping and hull prepared for anti-fouling paint.

-----

Michel Dufour S.A. reserves the right to modify the above specifications.